



Aug 13, 2013 - Present

CURRICULUM



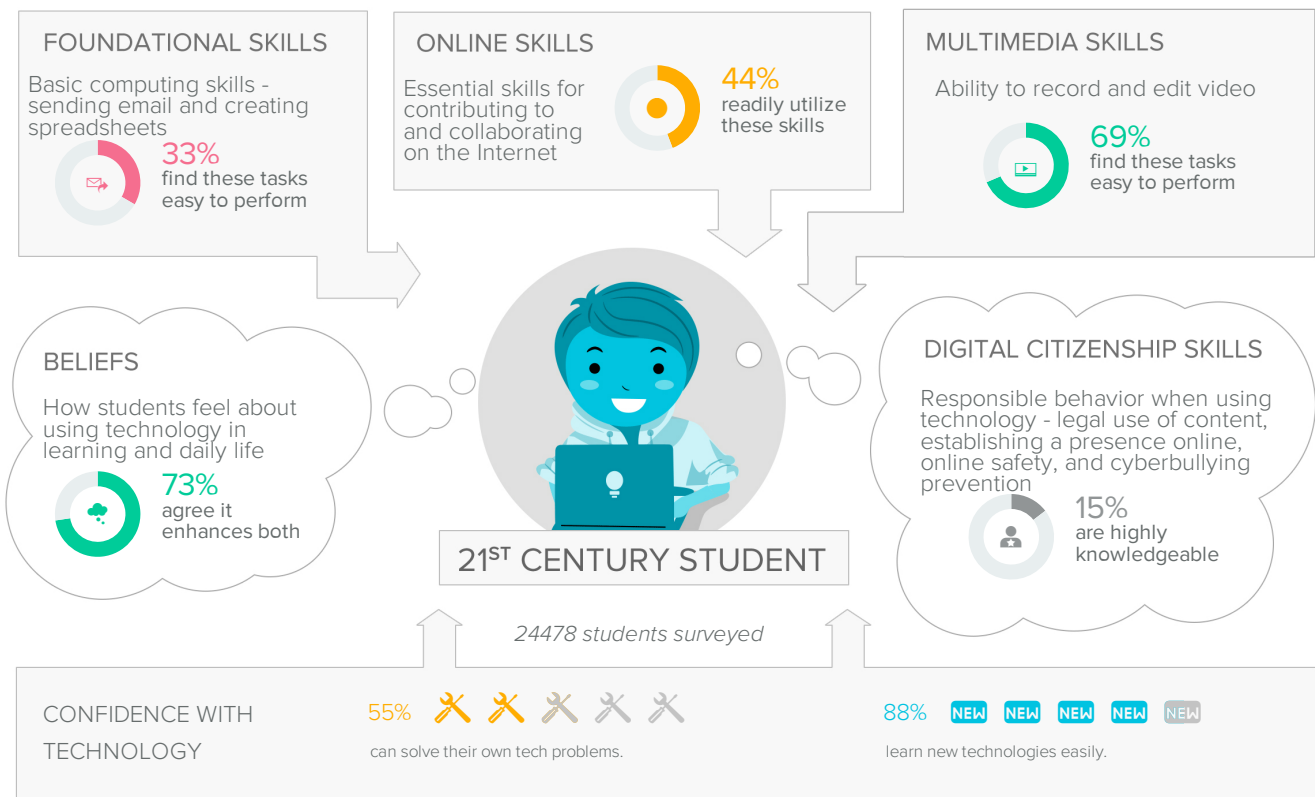
Although today's students are digital natives with many skills in social networking, the majority of them are not social learners with the ability to apply complex technology skills to everyday challenges.

Classrooms that prepare students for college and career seamlessly integrate technology into daily instruction in a way that intentionally scaffolds students' technology skills. Although today's students are digital natives with many skills in social networking, the majority of them are not social learners with the ability to apply complex technology skills to everyday challenges.

Furthermore, students' everyday experiences are seamlessly interwoven with digital devices and instant communication. In order to meet students "where they are," technology instruction must be infused in every subject area. Teachers are aware of this trend. According to a national *Pew* survey, 95% of students regularly use the Internet.

Given this, a modern curriculum must purposefully include incremental technology-infused skill acquisition. However, the design of every effective curriculum begins by considering the unique needs of the learners. Although students are comfortable tweeting and surfing the web, they still need support to use technology for productivity tasks such as creating spreadsheets and sending professional email.

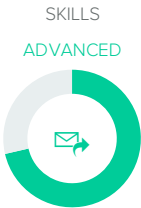
Being aware of students' skill profiles with technology can greatly inform the development of a cohesive, integrated curriculum that allows students to build the technology skills sets necessary for college and career.



Contributing Factors

The factors that most contribute to the success of your organization include ...

STUDENT FOUNDATIONAL



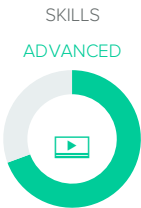
Historical data will appear here once you have collected year-over-year data.

STUDENT ONLINE SKILLS



Historical data will appear here once you have collected year-over-year data.

STUDENT MULTIMEDIA



Historical data will appear here once you have collected year-over-year data.

STUDENT BELIEFS



Historical data will appear here once you have collected year-over-year data.

CASE™ Score Legend

● Beginning

● Emerging

900-999

● Proficient

1000-1099

● Advanced

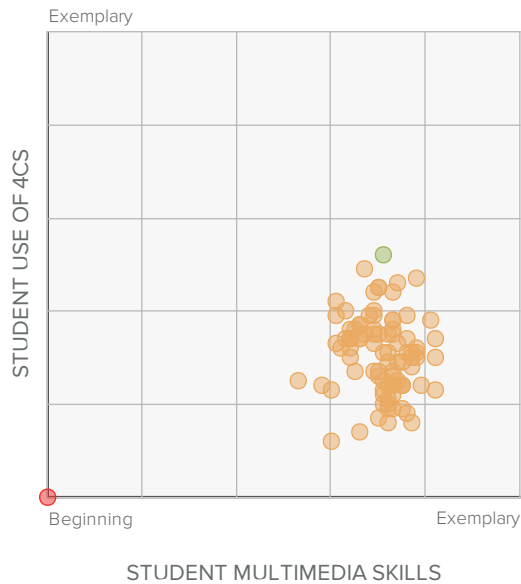
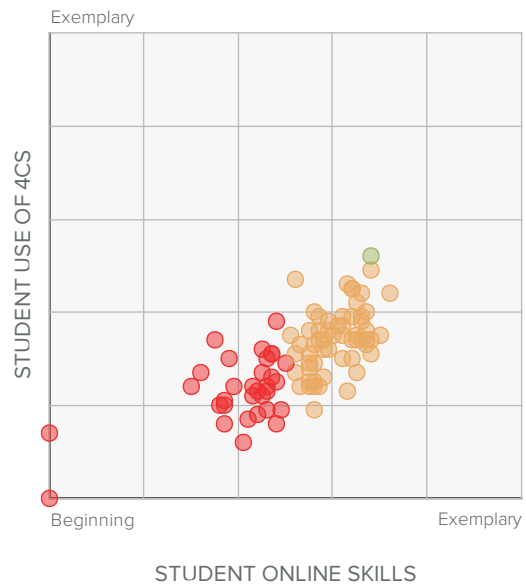
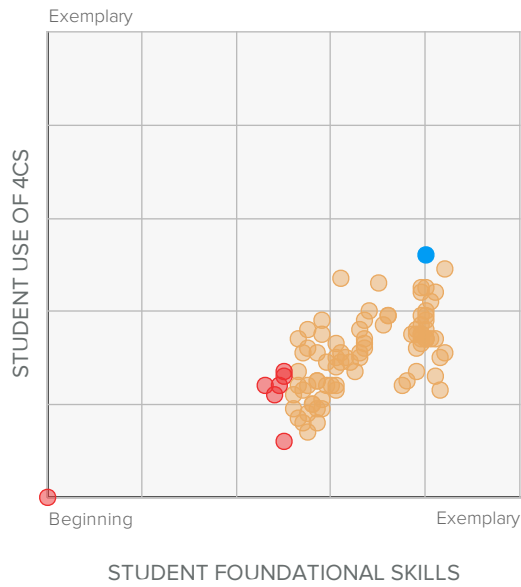
1100-1199

● Exemplary

1200-1300

Scatterplots

SKILLS



CASE™ Score Legend

● **Beginning**
800-899

● **Emerging**
900-999

● **Proficient**
1000-1099

● **Advanced**
1100-1199

● **Exemplary**
1200-1300

SCHOOL SCORECARD

	Foundational Skills	Online Skills	Multimedia Skills	Beliefs
Allegheny Valley Sd				
Acmetonia Primary School	●	●	●	●
Colfax Upper El School	●	●	●	●
Springdale Jshs	●	●	●	●
Avonworth Sd				
Avonworth Elementary School	●	●	●	●
Avonworth High School	●	●	●	●
Avonworth Middle School	●	●	●	●
Bethel Park Sd				
Abraham Lincoln Elementary School	●	●	●	●
Benjamin Franklin Elementary School	●	●	●	●
Bethel Memorial Elementary School	●	●	●	●
Bethel Park High School	●	●	●	●
George Washington Elementary School	●	●	●	●
Independence Middle School	●	●	●	●
Neil Armstrong 5 6 Middle School	●	●	●	●
Brentwood Borough Sd				
Brentwood Ms	●	●	●	●
Brentwood Shs	●	●	●	●
Elroy Ave. Elementary School	●	●	●	●
Moore School	●	●	●	●
Chartiers Valley Sd				
Chartiers Valley Hs	●	●	●	●
Chartiers Valley Intrmd School	●	●	●	●
Chartiers Valley Ms	●	●	●	●

Clairton City Sd				
Clairton El School	●	●	●	●
Clairton Ms/Hs	●	●	●	●
Elizabeth Forward Sd				
Central Elementary	●	●	●	●
Elizabeth Forward Middle	●	●	●	●
Mt. Vernon Elementary	●	●	●	●
William Penn Elementary	●	●	●	●
Gateway Sd				
Dr. Cleveland Steward Jr. Elementary	●	●	●	●
Evergreen Elementary	●	●	●	●
Gateway Middle	●	●	●	●
Gateway Senior High	●	●	●	●
Moss Side Middle	●	●	●	●
Ramsey Elementary	●	●	●	●
University Elementary	●	●	●	●
Hampton Township Sd				
Central El School	●	●	●	●
Hampton Hs	●	●	●	●
Hampton Ms	●	●	●	●
Poff El School	●	●	●	●
Wyland El School	●	●	●	●
North Allegheny Sd				
Bradford Woods Elementary	●	●	●	●
Carson Middle	●	●	●	●
Franklin Elementary	●	●	●	●
Hosack Elementary	●	●	●	●
Ingomar Elementary	●	●	●	●
Ingomar Middle	●	●	●	●
Marshall Elementary	●	●	●	●
Marshall Middle	●	●	●	●
Mc Knight Elementary	●	●	●	●
North Allegheny Ihs	●	●	●	●
North Allegheny Shs	●	●	●	●

Peebles Elementary	●	●	●	●
Penn Hills Sd				
Forbes Elementary	●	●	●	●
Linton Middle	●	●	●	●
Penn Hebron Elementary	●	●	●	●
Penn Hills Shs	●	●	●	●
Washington Elementary	●	●	●	●
Pine Richland Sd				
Eden Hall Upper El School	●	●	●	●
Hance El School	●	●	●	●
Pine Richland Hs	●	●	●	●
Pine Richland Ms	●	●	●	●
Richland El School	●	●	●	●
Wexford El School	●	●	●	●
Plum Borough Sd				
Center Elementary School	●	●	●	●
Holiday Park Elementary	●	●	●	●
Oblock Junior High School	●	●	●	●
Pivik Elementary	●	●	●	●
Plum Senior High	●	●	●	●
Regency Park Elementary	●	●	●	●
Stevenson Elementary	●	●	●	●
Quaker Valley Sd				
Edgeworth Elementary	●	●	●	●
Osborne Elementary	●	●	●	●
Quaker Valley High	●	●	●	●
Quaker Valley Middle	●	●	●	●
South Fayette Township Sd				
South Fayette Middle	●	●	●	●
West Allegheny Sd				
Donaldson Elementary	●	●	●	●
Mckee Elementary	●	●	●	●
West Allegheny High	●	●	●	●

West Allegheny Middle	●	●	●	●
Wilson Elementary	●	●	●	●
West Jefferson Hills Sd				
Gill Hall Elementary School	●	●	●	●
Jefferson Elementary School	●	●	●	●
Mc Clellan Elementary School	●	●	●	●
Pleasant Hills Middle School	●	●	●	●
Thomas Jefferson High School	●	●	●	●
Woodland Hills Sd				
Dickson Elementary	●	●	●	●
Edgewood Elementary	●	●	●	●
Fairless Elementary	●	●	●	●
Shaffer Elementary	●	●	●	●
Wilkins Elementary	●	●	●	●
Woodland Hills Academy	●	●	●	●
Woodland Hills Junior High	●	●	●	●
Woodland Hills Senior High	●	●	●	●

CASE™ Score Legend

● **Beginning**

800-899

● **Emerging**

900-999

● **Proficient**

1000-1099

● **Advanced**

1100-1199

● **Exemplary**

1200-1300

Aug 13, 2013 - Present